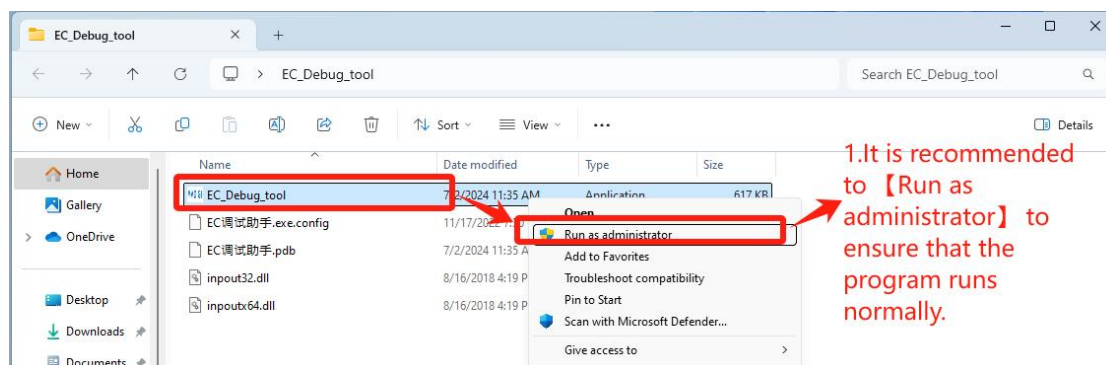


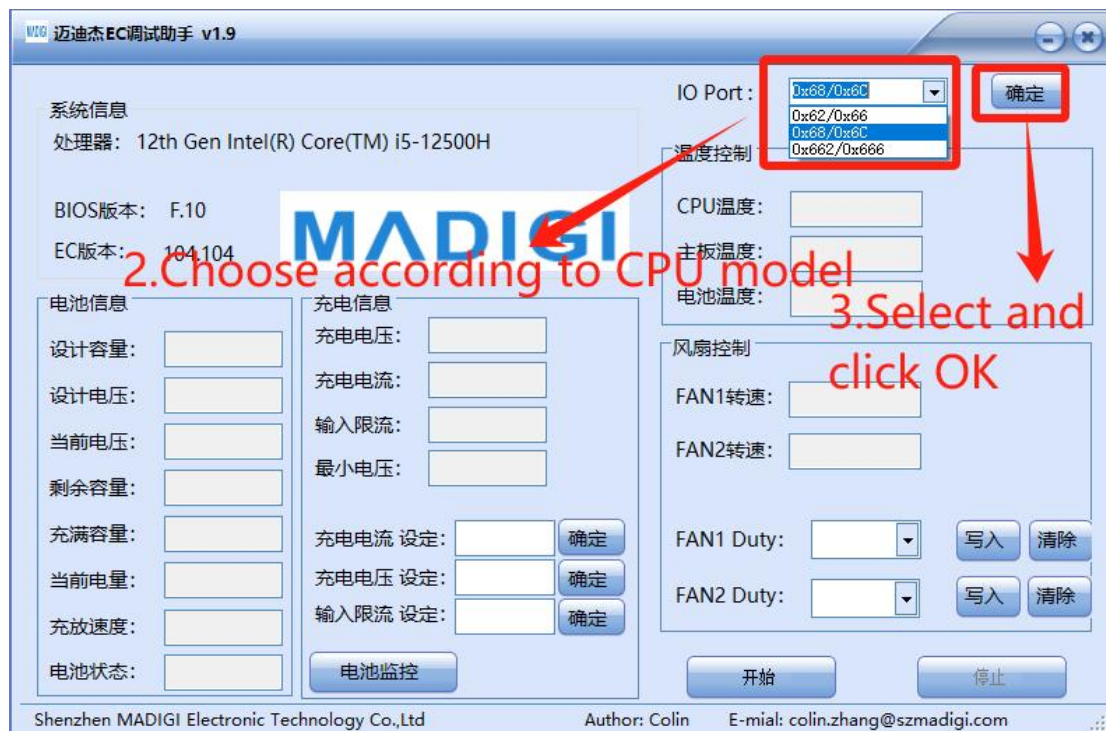
EC_Debug_tool instructions for use

1. Double-click to open EC_Debug_tool



2. Set according to CPU brand

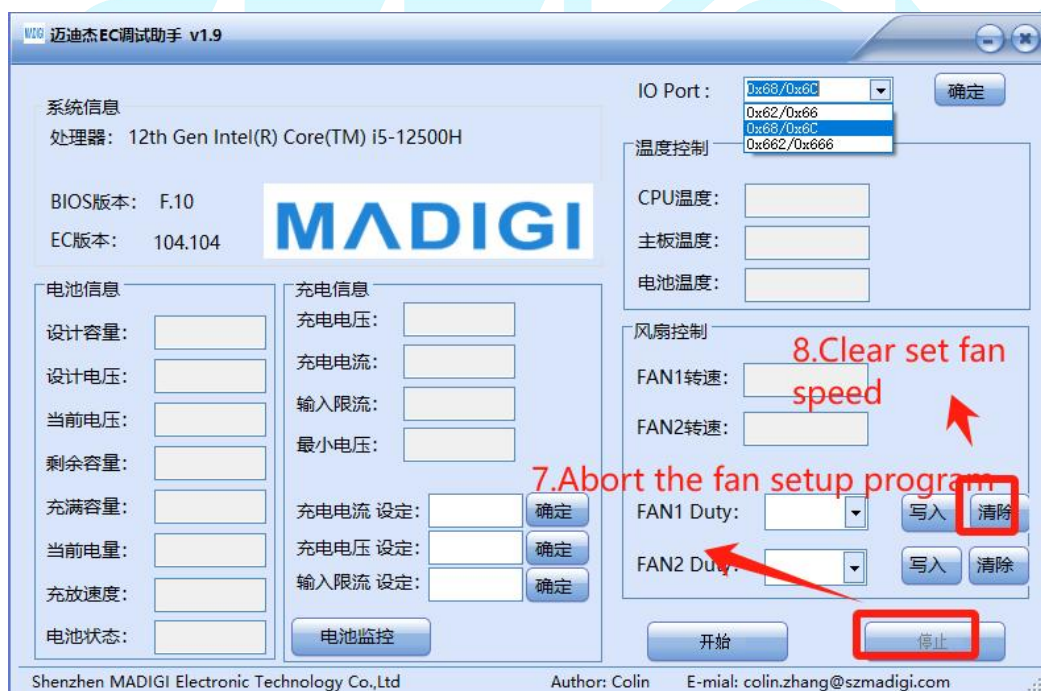
- IO Port: Select **【0x62/0x66】** for CPU **Intel** platform, click "OK"
- IO Port: Select **【0x662/0x666】** for CPU **AMD** platform, click "OK"



3. Set fan speed, just set in 【FAN1 Duty】



4. Clear settings and re-debug



Thank you for watching. If there are any mistakes, your corrections are welcome.